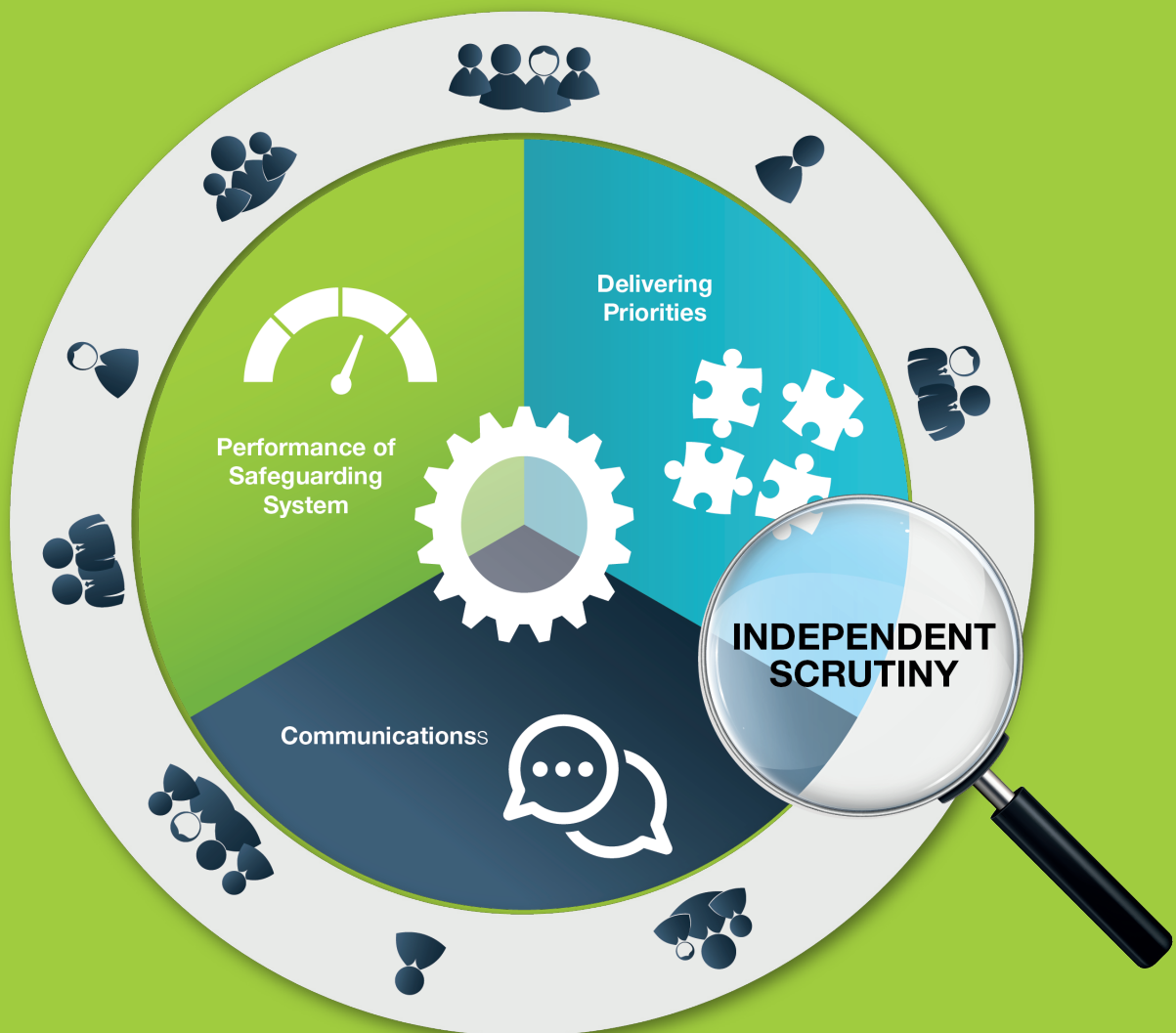


Multi Agency Safeguarding Arrangements for Children and Young People in the Royal Borough of Windsor & Maidenhead



Welcome

Thank you for taking the time to read this document, it will help you understand the arrangements for working together to keep children and young people safe in the Royal Borough of Windsor and Maidenhead. The statutory safeguarding partners coming together to make these safeguarding arrangements are:

- the East Berkshire Clinical Commissioning Group (CCG).
- the local authority, Royal Borough of Windsor & Maidenhead (RBWM) with children's services delivered by Achieving for Children (AFC).
- Thames Valley Police (TVP).

The safeguarding arrangements cover the geographical footprint of the local authority. However some arrangements, such as those for child death, will continue to be carried out on a pan Berkshire basis.

These arrangements meet the statutory requirements of the Children Act 2004 and the Children and Social Work Act 2017 as set out in Working Together to Safeguard Children 2018ⁱ and related guidance such as the NHS Safeguarding Accountability and Assurance Frameworkⁱⁱ.

As the three officers charged with ensuring these arrangements are effective for the children and young people who live, play and are educated in the Royal Borough of Windsor & Maidenhead, we look forward to working with you.



Kevin McDaniel
Director of Children's Services
Royal Borough of Windsor &
Maidenhead



Sarah Bellars
Director of Nursing and Quality
NHS East Berkshire CCG



Nicholas John
Detective Supt - Head of
Protecting Vulnerable People
Thames Valley Police

ⁱWorking Together to Safeguard Children 2018 available at <https://www.gov.uk/government/publications/working-together-to-safeguard-children--2>

ⁱⁱNHS England and NHS Improvement, "Safeguarding Children, Young People and Adults at Risk in the NHS: Safeguarding Accountability and Assurance Framework" First published March 2013, Updated 27th March 2019.

The vision

These arrangements focus on ensuring the best safeguarding practice across the Royal Borough by providing clear, consistent and high quality advice and information to everyone either working or caring for children and young people.

We have set out a dynamic arrangement which has the capacity to respond effectively across the safeguarding system in place of the more traditional Safeguarding Board structure with large meetings and formal sub groups. The arrangements will be guided by a diverse group of individuals from across the system who will encourage wide participation in a number of work streams that address particular issues or priorities.



The strength of the local safeguarding system is critically dependent on collaborative working between the safeguarding partners, relevant agencies, families and young people. Connecting us all together through timely and accessible communication represents a key priority, which will be led and driven by the safeguarding development and support team, to build a trusted voice for safeguarding in the Royal Borough.

How we will work together



The safeguarding partners have the equal and joint responsibility for ensuring full participation with the arrangements in the Royal Borough, both within their own organisations and beyond. Robust leadership is crucial for these arrangements to be effective in bringing everyone together and, therefore, the safeguarding partners are committed to providing strong leadership and active promotion of safeguarding best practice across the area.

There is a desire to better align the currently separate arrangements for adult and children's services to provide a more joined up approach for families and work with other local partnerships such as the Community Safety Partnership and the Health and Well Being Board on strategic issues within families such as domestic abuse or exploitation.

The Child Safeguarding Practice Review and Relevant Agency (England) Regulations 2018ⁱⁱⁱ set out the list of **Relevant Agencies** who also have a duty to co-operate with the arrangements made by the safeguarding partners. Some of these organisations are already actively engaged in local safeguarding arrangements and the safeguarding partners look forward to working with all relevant agencies in the forthcoming months.

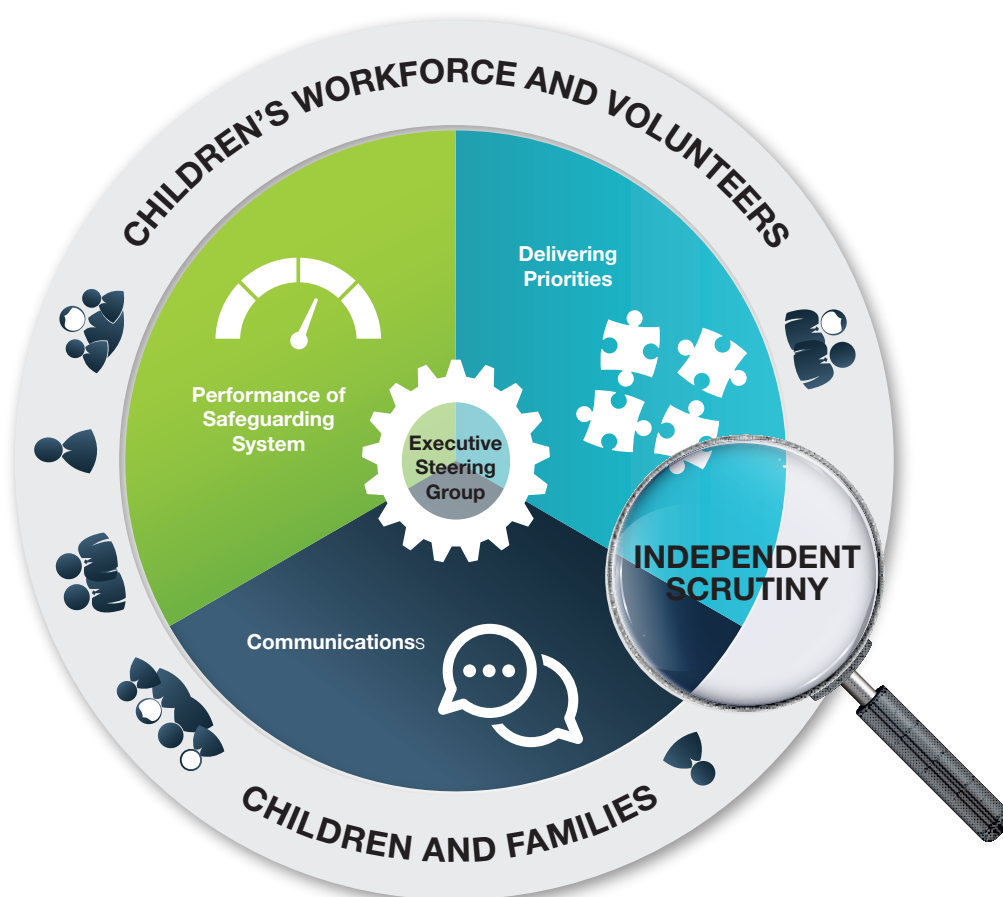
How we will hear the voice of children & families

All our work will be underpinned by a consideration of the views and experiences of our children and their families and we expect the delivery of our priorities to actively reflect their voice. Our arrangements specifically include capacity to ensure children and young people's voices are heard and appropriately represented in our work.

We know that there are already strong processes and networks in place to capture children's views, including:

- Acting upon the analysis of findings from local surveys of children and young people, particularly those who may be vulnerable.
- Seeking the views of our children in care.
- Consultation on new policies and procedures.
- Encouraging family participation in local practice reviews to maximise learning opportunities.

What are the new arrangements?



At the hub of our arrangements is the multi agency **Executive Steering Group** which will oversee the delivery of local safeguarding priorities and is accountable for the effectiveness of the safeguarding arrangements.

The steering group will harness a **Safeguarding Performance System** of performance indicators, data scrutiny and analysis, and multi-agency audits to ensure that the working practises are working well.

Working with the children's workforce the arrangements will define local safeguarding priorities each year and establish a series of task and finish groups that will be tasked with **Delivering Priorities** in a timely and effective manner.

The support team for the arrangements will be focused on ensuring that there is a distinct **Communications** programme which will become a trusted source of safeguarding information which cross-links with the existing ways information is shared.

The overall impact of the arrangements will be subject to **Independent Scrutiny** which will provide regular updates to everyone on the effectiveness of these arrangements, including annual recommendations for development alongside local priorities.



Children's Safeguarding Executive Steering Group

Chaired by the local authority, Police and Clinical Commissioning Group on a rotating basis, the group includes standing professionals from the safeguarding partners, representatives from relevant agencies and independent lay members as set out below. The Steering Group therefore consists of 12 people.

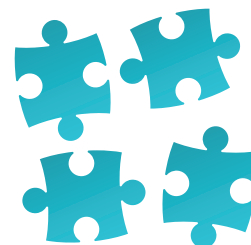
The group will have three scheduled meetings a year which will be held in public with published papers and minutes. The group will also meet as needed in response to emerging issues throughout the year.

Membership of Children's Safeguarding Executive Steering Group

- Statutory Safeguarding Partners:
 - Director of Children's Services at Royal Borough of Windsor & Maidenhead
 - Board Level executive responsible for Safeguarding at East Berkshire Clinical Commissioning Group
 - Detective Superintendent, Head of Protecting Vulnerable People at Thames Valley Police
 - Three Representatives from the Relevant Agencies
 - Two Lay Members
 - Statutory Professionals:
 - Designated Clinical Officer of the CCG
 - Deputy Director of Children's Social Care in the local authority
 - Local Police Area Commander from TVP
 - The Lead Councillor for Children's Services
- Supported by the MASA business manager, employed on behalf of the arrangements.



Delivering Priorities



We will hold an annual multi agency safeguarding conference to share information, track emerging themes and to identify local safeguarding children and adult priorities for delivery through the year. All Relevant Agencies will be invited to attend this event which will be an opportunity for senior leaders in the local area to refresh their organisation's commitment to safeguarding and grow their network.

The agreed priorities identified through conference, annual report and performance monitoring will be developed into a series of work streams. These will take the form of task and finish groups with clearly defined outputs which will make a difference to multi-agency safeguarding practice. Work in these stream will be undertaken by anyone in the system with a contribution to make and we look forward to increasing the number of practitioners who take part in sharing their knowledge and growing their experience in safeguarding work.

This programme of work will be overseen by the MASA business manager and progress reported to the Children's Safeguarding Executive Steering Group. The **existing Pan Berkshire arrangements** will be maintained for Policy and Procedures for safeguarding children, Child Exploitation, Child Death Overview Panel and Section 11 sub group, which require continued close collaboration with our neighbours.



Performance of the Safeguarding System



The safeguarding arrangements will incorporate performance checks across the whole of the local safeguarding system based on the effective Outcomes Framework and the work of the former LSCB Monitoring & Evaluation Sub Group and Safeguarding Adults Board Quality Assurance Sub Group. A **Quality, Monitoring & Effectiveness Group** will oversee the existing multi agency performance frameworks for adults and children and drive the priorities for independent scrutiny. Membership of the group will be drawn from the organisations shown below and the group will be chaired by one of the Lay members, supported by the MASA support team.

Membership of Children's and Adults Quality, Monitoring & Effectiveness Group

Royal Borough of Windsor & Maidenhead	Frimley Health NHS Foundation Trust
Achieving for Children	Berkshire Healthcare Foundation Trust
Optalis	East Berkshire Clinical Commissioning Group
Thames Valley Police	National Probation Service
Schools	Royal Berkshire Fire & Rescue Service

The group will analyse the performance information to spot patterns and trends and escalate to the steering group as necessary. It will maintain a regular overview of local thresholds and identify when review is necessary. The former LSCB Threshold document^{iv} continues to be valid and the source of clear standards for all professionals working with children.

Working Together To Safeguard Children 2018 introduces **child safeguarding practice reviews** to replace serious case reviews. Responsibility for how our system learns lessons from serious child safeguarding incidents rests with the three safeguarding partners and will be overseen in practice by a Safeguarding Practice Review sub group. Discussions are taking place with partners in neighbouring areas to see if it is possible to introduce a single group across an East Berkshire footprint or across children and adults within the Borough in order that the range of experience and viewpoints is maximised. Regardless of scope this sub group will:

- Contribute to the new Rapid Review process as required.
- Commission and oversee reviews when they are agreed by the statutory partners.
- Implement the local learning from both local and wider national reviews of various types.

The safeguarding partners have 15 working days to identify serious child safeguarding cases and will carry out rapid reviews in response to any referral raised from across the Borough. A serious incident referral process will be published before the arrangements go live in September 2019.

The purpose of a child safeguarding practice review is to identify and inform improvement in safeguarding practice. Therefore, part of any review will include a clear plan for sharing the learning appropriately through a variety of methods. We will also identify and apply relevant learning from other processes such as Domestic Homicide Reviews and Safeguarding Adult Reviews.

We also recognise the value of undertaking alternative learning exercises (such as an informal multi agency learning review) on cases which are referred but don't meet the criteria.

Communications



The new arrangements will look to capitalise and make use of the range of communication methods available. We will have an **active information channel**, which will make enhanced use of technology including development of an interactive website covering safeguarding both of adults and children and better use of social media to improve communication. This resource, available to everyone, will provide easily accessible, up to date local and national safeguarding information, highlighting local issues and how we are responding to them as a partnership. It will also be where child safeguarding practice reviews and the Annual Report are published.

The key guidance will be refreshed in an annual newsletter following the safeguarding conference and agreement of priorities.

Independent Scrutiny

Working Together To Safeguard Children 2018 clearly requires statutory safeguarding partners to effectively scrutinise the whole safeguarding system, including each other's work. The statutory safeguarding partners recognise the importance of independent challenge and are aware of the value placed on the LSCB's statutory independence previously delivered through an independent chair.



Recognising the importance of independence, the arrangements will include appointed Lay people sitting alongside relevant agencies and safeguarding partners on the Children's Safeguarding Executive Steering Group. These independent roles will act as a critical friend to the statutory safeguarding partners and are open to individuals with knowledge and experience in keeping children safe.

They will support the Children's Safeguarding Executive Steering Group and play a role in commissioning and delivering the various task and finish groups. One post will have the key theme of ensuring that children and young people's voices are heard and appropriately represented in this work, while the other will have a focus on the effectiveness of the performance monitoring process.

In addition, separate, independent scrutiny will be commissioned to provide assurance about the effectiveness of the local safeguarding arrangements and their impact on local safeguarding practice. This will include looking at how well organisations come together to co-operate with one another to safeguard and promote the welfare of children and to hold each other to account for effective safeguarding. This scrutiny will undertake themed audits to inform the annual report which is a statutory requirement of the arrangements, and provide mid term feedback to inform the steering group of progress.

This investment in scrutiny will allow the statutory safeguarding partners to identify the difference local services are making to outcomes for children and their families, what is being done well and what needs to improve so that the annual conference can set the right local priorities.

The contribution of Relevant Agencies

The strength of the local safeguarding partnership working is predicated on the safeguarding partners working collaboratively with Relevant Agencies. As already explained, representatives from these organisations will sit on the Children's Safeguarding Executive Steering Group and all strategic safeguarding leaders will be invited to the annual safeguarding conference to ensure strategic oversight and awareness of safeguarding interventions to support children and their families.



We recognise that, in particular, schools, early years settings, colleges and other educational providers play a pivotal role in safeguarding children and young people and promoting their welfare. Therefore, we have included all schools (including independent, academies and free schools), colleges and educational providers as "relevant agencies".

We will maintain the established bi-annual self assessment process for school safeguarding and we will continue to contribute to relevant safeguarding networks including the Schools' Designated Safeguarding Leads Network and the Health Providers Forum.

How we will use data and intelligence

The new arrangements will continue to use data and intelligence to help assess the effectiveness of the support provided to children and their families across the safeguarding system including early help. The existing children and young people's outcomes framework has been reviewed for 2019/20 and is being handed over to the new arrangements.

The sharing of data for the purposes of safeguarding is well established and the new arrangements will publicise and maintain a clear data sharing agreement to support all partners to comply with their wider data sharing obligations.

Multi agency training

Individual organisations and agencies are committed to ensuring their workforce is sufficiently trained and competent in safeguarding children and young people. Most organisations provide, or have access to, their own safeguarding training and this will continue to be informed by case audits and national local practice reviews and research. This training should enable staff to understand both their own role and that of their organisation in relation to safeguarding.



Multi agency training adds value by bringing people (who may not normally work with each other) together to share different experiences, consider things from a different perspective and learn from other organisations. It supports a shared understanding of local safeguarding issues and facilitates a shared response across organisations. We recognise and acknowledge the challenges of releasing staff for even a short training event so aim to ensure that any training commissioned or provided under these arrangements meets the needs of busy professionals working in the Royal Borough.

The safeguarding partners will commission specific multi agency training aligned to the identified priorities and learning from case reviews and we will welcome wide participation in those events.

Funding



Safeguarding Partners have a duty to equitably support the safeguarding arrangements. The partners have agreed to continue to provide funding for the safeguarding arrangements on the same basis as the current LSCB arrangements and the existing Local Safeguarding Children Board (LSCB) budget will transfer to the new arrangements.

In the event of a child safeguarding practice review, additional funding will be met by the three safeguarding partners.

Pan Berkshire content

The Royal Borough is a small authority and therefore the safeguarding partners support the continued use of existing pan-Berkshire arrangements where possible and sensible to do so. For that reason, we will continue to engage in the Berkshire Child Death Overview Panel, Policies and Procedures, Child Exploitation and the Section 11 self assessment group.

In particular, the three safeguarding partners are committed to the existing pan Berkshire Multi Agency Safeguarding Children policies and procedures and will continue to be active members of the relevant group.

Transition to new arrangements

The safeguarding partners are adhering to the national guidance for transitioning from Local Safeguarding Children Boards to the new safeguarding arrangements for children.

There are a number of national timeline expectations to meet the requirements of the Working Together 2018 guidance, including:

- Statutory safeguarding partners must publish their safeguarding arrangements by 29 June 2019.
- Following publication, the safeguarding partners have up to three months from the date of publication to implement the arrangements and at this stage the Windsor & Maidenhead Local Safeguarding Children Board ceases to exist.
- There is a 12 month period for LSCBs to complete and publish any outstanding Serious Case Reviews after the new arrangements are in place.

We acknowledge that partners, particularly those working on a wider geographic footprint, are challenged by increasing numbers of meetings. We hope, therefore, that by streamlining our arrangements, we will be able to demonstrate a positive impact on safeguarding practice without adding to those challenges.

The Windsor & Maidenhead Local Safeguarding Children Board is not handing over any active serious case reviews to the new arrangements.

The new safeguarding arrangements are being introduced over the summer of 2019 and will be fully up and running for 1st September 2019.

More information

The three safeguarding partners are looking forward working in the new arrangements and are confident that they will make a difference to children, young people, their families and carers in the Royal Borough of Windsor and Maidenhead.

If you have any questions or would like more information please contact the safeguarding partners through the support team by emailing LSCB@rbwm.gov.uk

